



# *Children online: Risks they might face*

*Awareness raising session - Primary*



# *Risks they might face....*



Cyberbullying

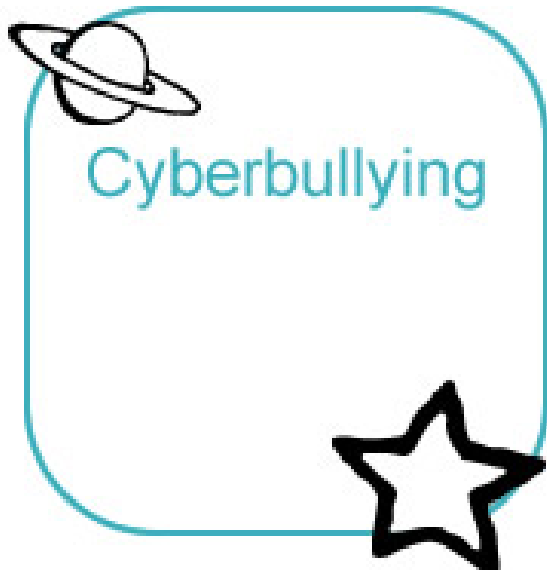


Grooming



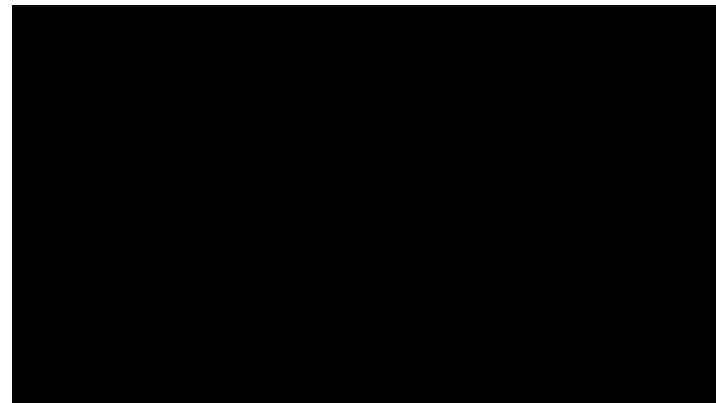
Inappropriate  
websites





What is Cyberbullying?

How and where can you be Cyberbullied?





# Top tips



- *Offer reassurance and support. Don't be afraid to ask questions*
- *Tell your child that if they are being bullied to always keep the evidence*
- *Block the bullies*
- *Learn how to report and where to go for further support*



**Peer to peer support network for young people who are being bullied**

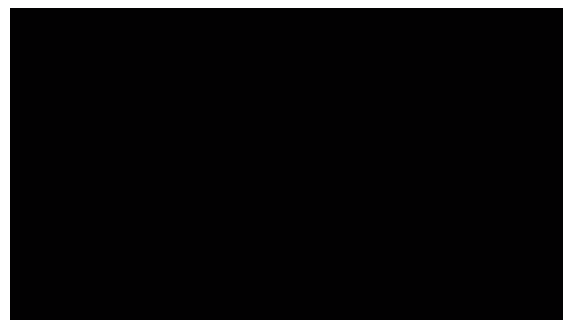
**[www.cybermentors.org.uk](http://www.cybermentors.org.uk)**



Grooming

What is online grooming?

What does an online friend mean to your child? Is it the same for you?





# Top tips



- *Talk to your child about online grooming*
- *Talk to them about their online friends*
- *Let your child know that you are always there for support and you understand how easy it is for things to get out of control online*
- *Learn how to report any inappropriate contact made to your child online*

The logo for CEOP (Child Exploitation and Online Protection) is located in the top left corner. It consists of the letters 'CEOP' in a bold, white, sans-serif font, with the word 'CENTRE' in a smaller font underneath. The logo is set against a white circular background.

# Report and Support

The 'THINK U KNOW' logo is in the top right corner. It features the words 'THINK U KNOW' in a bold, black, sans-serif font, with '.co.uk' in a smaller font below. The logo is set against a white background with a jagged, torn-paper edge effect.

**Report suspected online grooming** – this could be sexual chat, a child being asked to do something that makes them feel uncomfortable or someone insisting on meeting up .

[www.ceop.police.uk](http://www.ceop.police.uk)



**24 hour confidential helpline** for children and young people .



What does the 'inappropriate' mean in your house?

Not age appropriate:

- Violence
- Racial Hate
- Pro eating disorders
- Gambling
- Pornographic





# Parental Controls



Set controls on:

- Computers
- Laptops
- Tablets
- Mobile devices
- Games Consoles
- ALL internet enabled devices

Set on all devices  
that link to the  
internet

Remember... they are not 100% accurate and not a substitute for open communication!

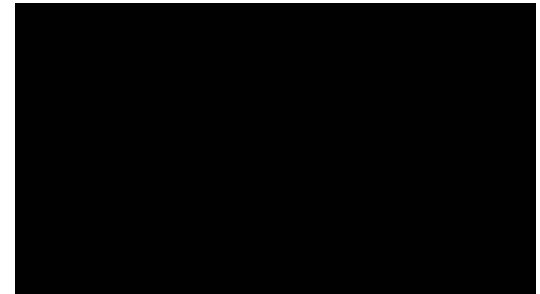


# Parental controls



## How can they help?

- Block sites that are not age appropriate
- limit inappropriate and illegal material
- Set timings – automatic switch off at bedtime
- Monitor activity
- **What do young people think...**



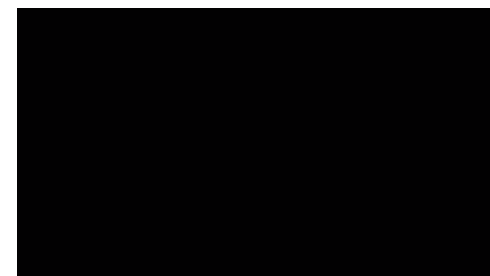


# Social networking: Privacy



## Is my child too young to have a Facebook account?

- Help set up their profile
- Add your email as the main contact (if possible)
- Set the privacy settings to “friends” only and ensure they are children you know
- Show them a CEOP safety resource which outlines the risks ([www.youtube.co.uk/ceop/jigsaw](http://www.youtube.co.uk/ceop/jigsaw))
- ‘Like’ the Click CEOP page
- Check in and keep updated





# Conversation starter....



View age appropriate animations and films at - [www.thinkuknow.co.uk/parents](http://www.thinkuknow.co.uk/parents)

[www.youtube.com/ceop](http://www.youtube.com/ceop)

**5-7**



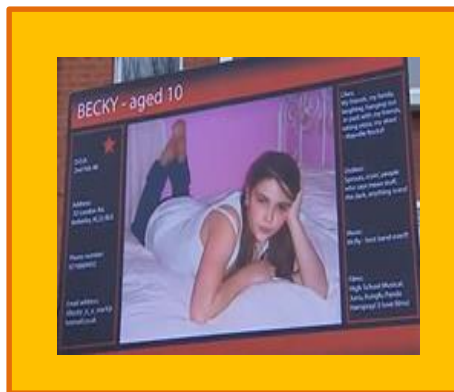
## ***Lee and Kim's Adventure: Animal Magic***

- Animation – Be nice to people, like you would in the playground

**8-10**

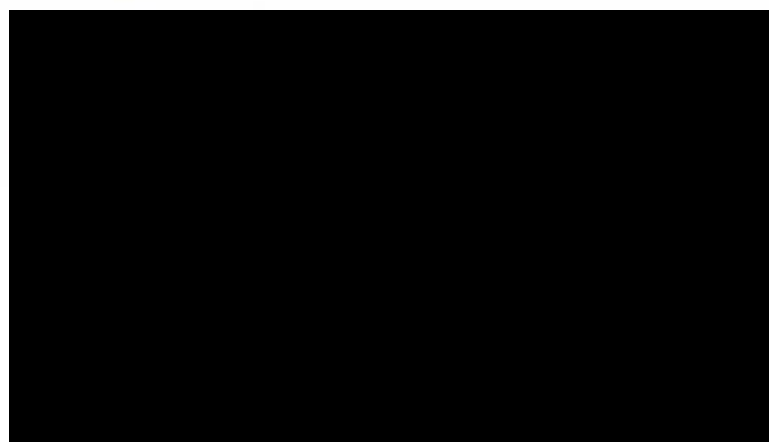
## ***Jigsaw***

- 10 minute film about Safe Social Networking

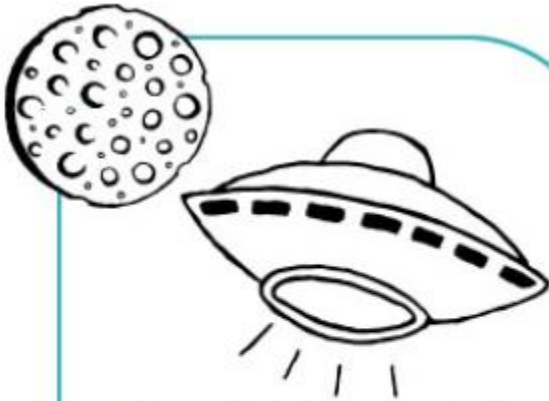




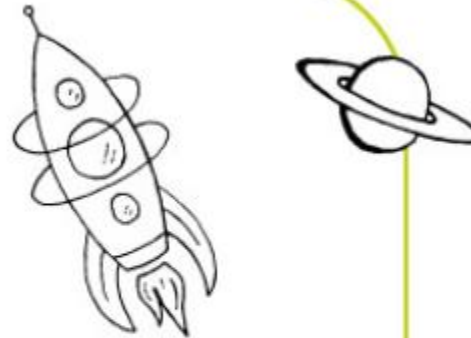
# THE PARENTS' AND CARERS' GUIDE TO THE INTERNET



# For more information...



Advice if your children are in  
**Primary Education**



Advice if your children are in  
**Secondary Education**

[www.thinkuknow.co.uk/parents](http://www.thinkuknow.co.uk/parents)

[www.facebook.com/ceop](https://www.facebook.com/ceop)

[www.twitter.com/ceop](https://www.twitter.com/ceop)